

Add Bluetooth connectivity to the Heritage

Maestro Wireless Solutions Bluetooth® Add-On for Maestro Heritage immediately give wireless connectivity between your Bluetooth® equipment and the Maestro Heritage.

Enjoy a GPRS/EDGE-Bluetooth Class 1 Gateway that will be integrated seamlessly in your existing facilities, achieving a range of up to 150m with a bit rate of 732kbps.

This Heritage Bluetooth® Add-on was especially design to target the healthcare and marketing vertical markets.

Main features:

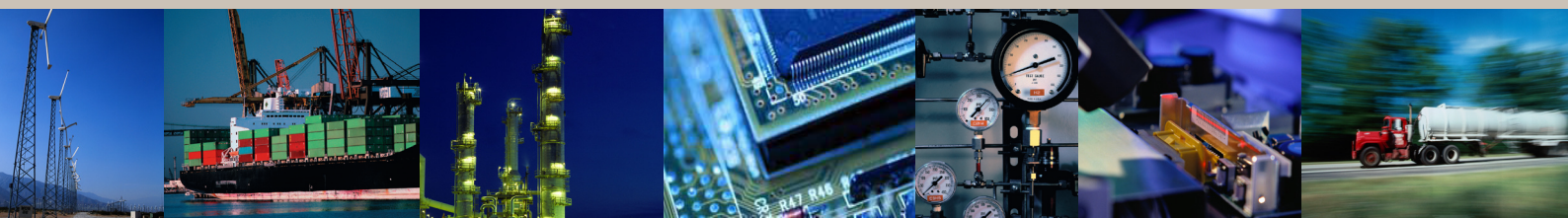
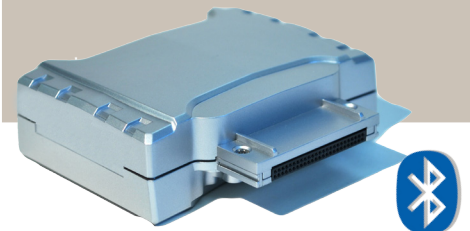
Transform your Heritage into a Cellular-Bluetooth Gateway:

- Transparent RS232 over Bluetooth transmission
- Industrial grade bluetooth: up to 150 meters at 732 kbps
- Embedded antenna
- High temperature range -30°C / +70°C



On-Demand Customization & Development

Using its embedded Open Platform and Easy to customize option board, Maestro Heritage makes it simple to adapt for any application. Thanks to a dedicated design team, the customer is supported all along the development process of its own board (JDM, OEM design services), therefore enabling him to reduce significantly his solution's time to market.



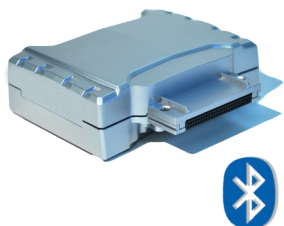
Serial connection between a device (meter, machine, transceiver, etc.) and a host computer (PC, PLC, etc.) is usually made by a simple cable. This universal solution is extremely cheap, very reliable and easy to set up.

But what if the device is too far from the computer? Rule of thumb is that serial cable length should not exceed fifteen meters.

Again, what if the device can not be reached? Having the device and the computer in different rooms can make the cable routing difficult.

Moreover, what if you want to connect several devices one after the other, but you cannot easily plug and unplug a cable?

To address that kind of issues, Maestro Wireless Solutions propose a range of Bluetooth® Dongle for transparent RS232 over Bluetooth® transmission, ideal for cable replacement and master/slave networking.



more info: www.maestro-wireless.com

Maestro Bluetooth Add-on Board	
Bluetooth V2 stack	Baseband, Link manager, L2CAP, RFCOMM, SDP
Bit rate	723kbps
Comm and Data profiles	GAP, SDAP, SPP, DUN, SPP config.
UART TTL ports	TXD - RXD - RTS - CTS (& DTR - DSR - DCD - RI / Profil DUN)
UART rate	Standard from 9.6 to 115,2kbps
Additional applications	Link setup and configuration - through AT commands
Using mode	Transparent serial link in addressed secured
Frequency	FHSS / 2.402 to 2.480GHz
Radiated RF power	100mW (20dBm)
Sensitivity	To -87dBm for BER = 10-3
Range in free field	150m (integrated antenna)
Operating voltage	3.8 to 20V
Stand-by unconnected consumption	22mA
Connected consumption	25mA
Transmission consumption	60mA
Burst transmission consumption	380mA
Power supply connector / DB9	3.5 mm DC µJack (or / Pin 9 « RI » on request)
Power supply connector / DB15	Pin 13 « RI » (or / 3.5 mm DC µJack on request)
Temperature range	-30°C / +70°C
Size	65 x 40 x 25 mm
Fully compliant with RTTE EN 300-328 / EN 301-489 (Europe) & FCC P15 / IC (US & CAN)	

Other available board:



Distributor's Contact

Maestro Wireless Solutions Ltd
 3603-9, 36/F
 118 Connaught Road West
 Hong Kong
 Tel: (852) 2869 0688
 Fax: (852) 2525 4701
 contact@maestro-wireless.com
 www.maestro-wireless.com

Copyright Maestro Wireless Solutions Limited.
 We reserve the right at any time and without prior notice to modify or improve the modems and the services offered. The same applies to the accessories which could also be withdrawn.
 Designed by SEVENMAGINE (www.sevenimage.com)

